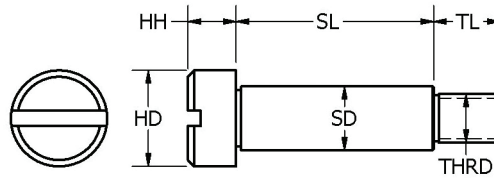
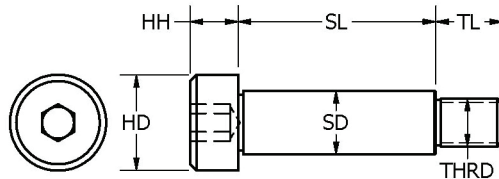


Precision Shoulder Screws

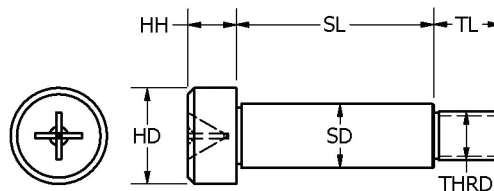
303, 416 Rc 26-32, Stainless Steel



Slotted Head



Hex Socket Head



Cross Recess Head

Choose **rino** because you get:

- **Precision shoulder screws** SD of $+0/-0.001$ and $+0.002/-0$ for SL
- **We will beat** any price in quantity - call us at 1-888-260-7466
- **Stock** in 303 and 416 RC 26-32 in hex drive and slotted
- **Inch or metric** sizes in stock for same day shipment
- **Custom** shoulder screws in virtually any material, change any dimension
- **Custom** screws to your print
- **Quick delivery** on standards and customs
- **Large quantities** - 1,000 to 20,000 quickly

3D CAD and product Parameter Search at www.rinomechanical.com

Rino Mechanical Components Inc.
 216 North Main St. · Freeport, NY 11520
 Ph 516-771-6777 · Fax 516-771-6444

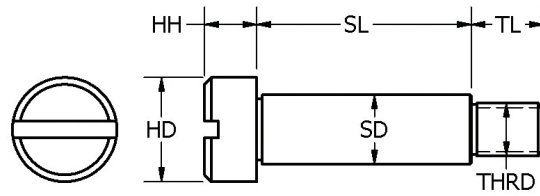
Phillips: special order only, min. qty req.

Shoulder Screws · Inch
 303 SS - Rockwell B-83
 416 SS - Rockwell C26-32

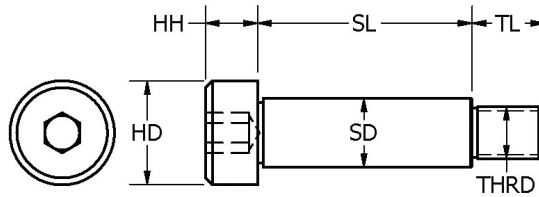
-.001 SD	+.002 SL	±.005 HD	±.005 HH	TH	TL	HX	DR	Slotted Hd.		Hex Socket Head		Phillips Head	
								303SS	416SS	303SS	416SS	303SS	416SS
.0935	.0943	3/16	3/32	#2-56	1/8	1/16	--	G4301	G4501	G4401	G4601	----	----
.0935	.1255	3/16	3/32	#2-56	1/8	1/16	--	G4302	G4502	G4402	G4602	----	----
.0935	.1880	3/16	3/32	#2-56	1/8	1/16	--	G4303	G4503	G4403	G4603	----	----
.0935	.2505	3/16	3/32	#2-56	1/8	1/16	--	G4304	G4504	G4404	G4604	----	----
.0935	.3130	3/16	3/32	#2-56	1/8	1/16	--	G4305	G4505	G4405	G4605	----	----
.0935	.3755	3/16	3/32	#2-56	1/8	1/16	--	G4306	G4506	G4406	G4606	----	----
.0935	.5005	3/16	3/32	#2-56	1/8	1/16	--	G4307	G4507	G4407	G4607	----	----
.1245	.1255	1/4	1/8	#4-40	5/32	5/64	1	G4310	G4510	G4410	G4610	G4710	G4810
.1245	.1880	1/4	1/8	#4-40	5/32	5/64	1	G4311	G4511	G4411	G4611	G4711	G4811
.1245	.2505	1/4	1/8	#4-40	5/32	5/64	1	G4312	G4512	G4412	G4612	G4712	G4812
.1245	.3130	1/4	1/8	#4-40	5/32	5/64	1	G4313	G4513	G4413	G4613	G4713	G4813
.1245	.3755	1/4	1/8	#4-40	5/32	5/64	1	G4314	G4514	G4414	G4614	G4714	G4814
.1245	.5005	1/4	1/8	#4-40	5/32	5/64	1	G4370	G4570	G4470	G4670	----	----
.1245	.6255	1/4	1/8	#4-40	5/32	5/64	1	G4371	G4571	G4471	G4671	----	----
.1245	.7505	1/4	1/8	#4-40	5/32	5/64	1	G4372	G4572	G4472	G4672	----	----
.1245	1.0005	1/4	1/8	#4-40	5/32	5/64	1	G4373	G4573	G4473	G4673	----	----
.1557	.1255	9/32	1/8	#6-32	3/16	3/32	1	G4361	G4561	G4461	G4661	----	----
.1557	.1880	9/32	1/8	#6-32	3/16	3/32	1	G4362	G4562	G4462	G4662	----	----
.1557	.2505	9/32	1/8	#6-32	3/16	3/32	1	G4363	G4563	G4463	G4663	----	----
.1557	.3130	9/32	1/8	#6-32	3/16	3/32	1	G4364	G4564	G4464	G4664	----	----
.1557	.3755	9/32	1/8	#6-32	3/16	3/32	1	G4365	G4565	G4465	G4665	----	----
.1557	.4380	9/32	1/8	#6-32	3/16	3/32	1	G4385	G4585	G4485	G4685	----	----
.1557	.5005	9/32	1/8	#6-32	3/16	3/32	1	G4374	G4574	G4474	G4674	G4774	----
.1557	.6255	9/32	1/8	#6-32	3/16	3/32	1	G4375	G4575	G4475	G4675	----	----
.1557	.7505	9/32	1/8	#6-32	3/16	3/32	1	G4376	G4576	G4476	G4676	----	----
.1557	1.0005	9/32	1/8	#6-32	3/16	3/32	1	G4377	G4577	G4477	G4677	----	----
.1870	.1255	5/16	5/32	#8-32	3/16	3/32	2	G4315	G4515	G4415	G4615	G4715	G4815
.1870	.1565	5/16	5/32	#8-32	3/16	3/32	2	G4383	G4583	G4483	G4683	G4783	G4883
.1870	.1880	5/16	5/32	#8-32	3/16	3/32	2	G4316	G4516	G4416	G4616	G4716	G4816
.1870	.2505	5/16	5/32	#8-32	3/16	3/32	2	G4317	G4517	G4417	G4617	G4717	G4817
.1870	.3130	5/16	5/32	#8-32	3/16	3/32	2	G4318	G4518	G4418	G4618	G4718	G4818
.1870	.3755	5/16	5/32	#8-32	3/16	3/32	2	G4319	G4519	G4419	G4619	G4719	G4819
.1870	.5005	5/16	5/32	#8-32	3/16	3/32	2	G4320	G4520	G4420	G4620	G4720	G4820
.1870	.6255	5/16	5/32	#8-32	3/16	3/32	2	G4321	G4521	G4421	G4621	G4721	G4821
.1870	.7505	5/16	5/32	#8-32	3/16	3/32	2	G4322	G4522	G4422	G4622	G4722	G4822
.1870	.8755	5/16	5/32	#8-32	3/16	3/32	2	G4382	G4582	G4482	G4682	G4782	G4882
.1870	1.0005	5/16	5/32	#8-32	3/16	3/32	2	G4323	G4523	G4423	G4623	G4723	G4823
.1870	1.2505	5/16	5/32	#8-32	3/16	3/32	2	G4324	G4524	G4424	G4624	G4724	G4824
.1870	1.3755	5/16	5/32	#8-32	3/16	3/32	2	G4381	G4581	G4481	G4681	----	----
.1870	1.5005	5/16	5/32	#8-32	3/16	3/32	2	G4325	G4525	G4425	G4625	G4725	G4825
.2495	.1255	3/8	3/16	#10-32	1/4	1/8	2	G4326	G4526	G4426	G4626	G4726	G4826
.2495	.1880	3/8	3/16	#10-32	1/4	1/8	2	G4327	G4527	G4427	G4627	G4727	G4827
.2495	.2505	3/8	3/16	#10-32	1/4	1/8	2	G4328	G4528	G4428	G4628	G4728	G4828
.2495	.3130	3/8	3/16	#10-32	1/4	1/8	2	G4329	G4529	G4429	G4629	G4729	G4829
.2495	.3755	3/8	3/16	#10-32	1/4	1/8	2	G4330	G4530	G4430	G4630	G4730	G4830
.2495	.4380	3/8	3/16	#10-32	1/4	1/8	2	G4390	G4590	G4490	G4690	----	----
.2495	.5005	3/8	3/16	#10-32	1/4	1/8	2	G4331	G4531	G4431	G4631	G4731	G4831
.2495	.6255	3/8	3/16	#10-32	1/4	1/8	2	G4332	G4532	G4432	G4632	G4732	G4832
.2495	.7505	3/8	3/16	#10-32	1/4	1/8	2	G4333	G4533	G4433	G4633	G4733	G4833
.2495	.8755	3/8	3/16	#10-32	1/4	1/8	2	G4388	G4588	G4488	G4688	----	----
.2495	1.0005	3/8	3/16	#10-32	1/4	1/8	2	G4334	G4534	G4434	G4634	G4734	G4834
.2495	1.2505	3/8	3/16	#10-32	1/4	1/8	2	G4335	G4535	G4435	G4635	G4735	G4835
.2495	1.5005	3/8	3/16	#10-32	1/4	1/8	2	G4336	G4536	G4436	G4636	G4736	G4836
.3120	.2505	1/2	7/32	#1/4-20	7/16	5/32	3	G4337	G4537	G4437	G4637	G4737	G4837
.3120	.3130	1/2	7/32	#1/4-20	7/16	5/32	3	G4338	G4538	G4438	G4638	G4738	G4838
.3120	.3755	1/2	7/32	#1/4-20	7/16	5/32	3	G4339	G4539	G4439	G4639	G4739	G4839
.3120	.5005	1/2	7/32	#1/4-20	7/16	5/32	3	G4340	G4540	G4440	G4640	G4740	G4840
.3120	.6255	1/2	7/32	#1/4-20	7/16	5/32	3	G4341	G4541	G4441	G4641	G4741	G4841
.3120	.7505	1/2	7/32	#1/4-20	7/16	5/32	3	G4342	G4542	G4442	G4642	G4742	G4842
.3120	.8755	1/2	7/32	#1/4-20	7/16	5/32	3	G4378	G4578	G4478	G4678	----	----
.3120	1.0005	1/2	7/32	#1/4-20	7/16	5/32	3	G4389	G4589	G4489	G4689	----	----

-001 SD	+002 SL	±005 HD	±005 HH	TH	TL	HX	DR	Slotted Hd.		Hex Socket Head		Phillips Head	
								303SS	416SS	303SS	416SS	303SS	416SS
.3745	.3130	1/2	7/32	#1/4-20	7/16	5/32	3	G4343	G4543	G4443	G4643	G4743	G4843
.3745	.3755	1/2	7/32	#1/4-20	7/16	5/32	3	G4344	G4544	G4444	G4644	G4744	G4844
.3745	.5005	1/2	7/32	#1/4-20	7/16	5/32	3	G4345	G4545	G4445	G4645	G4745	G4845
.3745	.6255	1/2	7/32	#1/4-20	7/16	5/32	3	G4346	G4546	G4446	G4646	G4746	G4846
.3745	.3130	9/16	1/4	#5/16-18	1/2	3/16	4	G4347	G4547	G4447	G4647	G4747	G4847
.3745	.3755	9/16	1/4	#5/16-18	1/2	3/16	4	G4348	G4548	G4448	G4648	G4748	G4848
.3745	.5005	9/16	1/4	#5/16-18	1/2	3/16	4	G4349	G4549	G4449	G4649	G4749	G4849
.3745	.6255	9/16	1/4	#5/16-18	1/2	3/16	4	G4350	G4550	G4450	G4650	G4750	G4850
.3745	.7505	9/16	1/4	#5/16-18	1/2	3/16	4	G4379	G4579	G4479	G4679	----	----
.3745	1.0005	9/16	1/4	#5/16-18	1/2	3/16	4	G4380	G4580	G4480	G4680	----	----
.3745	1.2505	9/16	1/4	#5/16-18	1/2	3/16	4	G4386	G4586	G4486	G4686	----	----
.3745	1.5005	9/16	1/4	#5/16-18	1/2	3/16	4	G4384	G4584	G4484	G4684	----	----
.4995	.3130	3/4	5/16	3/8-16	5/8	1/4	4	G4387	G4587	G4487	G4687	----	----
.4995	.5005	3/4	5/16	3/8-16	5/8	1/4	4	G4351	G4551	G4451	G4651	G4751	G4851
.4995	.6255	3/4	5/16	3/8-16	5/8	1/4	4	G4352	G4552	G4452	G4652	G4752	G4852
.4995	.7505	3/4	5/16	3/8-16	5/8	1/4	4	G4353	G4553	G4453	G4653	G4753	G4853
.4995	1.0005	3/4	5/16	3/8-16	5/8	1/4	4	G4354	G4554	G4454	G4654	G4754	G4854

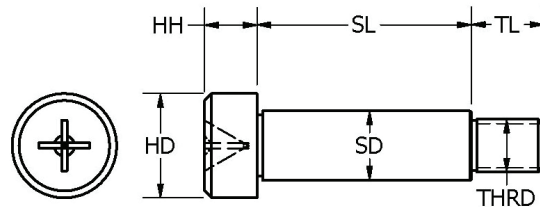
Specials made to order



Slotted Head



Hex Socket Head

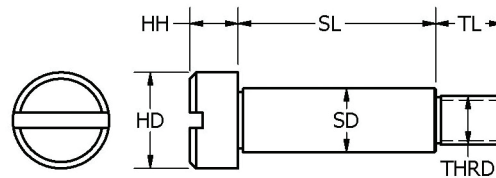


Cross Recess Head

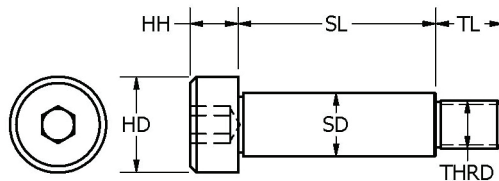
-.025 SD	+.050 SL	±.127 HD	±.127 HH	TH	TL	HX	DR	Slotted Head		Hex Socket Head		Phillips Head	
								303 SS	416 SS	303 SS	416 SS	303 SS	416 SS
3.987	3.01	6	3	M3	4	2	1	GM6364	GM6564	GM6464	GM6664	GM6764	GM6864
3.987	4.013	6	3	M3	4	2	1	GM6301	GM6501	GM6401	GM6601	GM6701	GM6801
3.987	5.013	6	3	M3	4	2	1	GM6302	GM6502	GM6402	GM6602	GM6702	GM6802
3.987	6.013	6	3	M3	4	2	1	GM6303	GM6503	GM6403	GM6603	GM6703	GM6803
3.987	7.013	6	3	M3	4	2	1	GM6365	GM6565	GM6465	GM6665	GM6765	GM6865
3.987	8.013	6	3	M3	4	2	1	GM6304	GM6504	GM6404	GM6604	GM6704	GM6804
3.987	10.013	6	3	M3	4	2	1	GM6305	GM6505	GM6405	GM6605	GM6705	GM6805
3.987	12.013	6	3	M3	4	2	1	GM6377	GM6577	GM6477	GM6677	GM6777	GM6877
3.987	16.013	6	3	M3	4	2	1	GM6380	GM6580	GM6480	GM6680	GM6780	GM6880
3.987	20.013	6	3	M3	4	2	1	GM6381	GM6581	GM6481	GM6681	GM6781	GM6881
3.987	30.013	6	3	M3	4	2	1	GM6360	GM6560	GM6460	GM6660	GM6760	GM6860
4.987	4.013	8	4	M4	5	2.5	2	GM6306	GM6506	GM6406	GM6606	GM6706	GM6806
4.987	5.013	8	4	M4	5	2.5	2	GM6307	GM6507	GM6407	GM6607	GM6707	GM6807
4.987	6.013	8	4	M4	5	2.5	2	GM6308	GM6508	GM6408	GM6608	GM6708	GM6808
4.987	7.013	8	4	M4	5	2.5	2	GM6366	GM6566	GM6466	GM6666	GM6766	GM6866
4.987	8.013	8	4	M4	5	2.5	2	GM6309	GM6509	GM6409	GM6609	GM6709	GM6809
4.987	9.013	8	4	M4	5	2.5	2	GM6375	GM6575	GM6475	GM6675	GM6775	GM6875
4.987	10.013	8	4	M4	5	2.5	2	GM6310	GM6510	GM6410	GM6610	GM6710	GM6810
4.987	12.013	8	4	M4	5	2.5	2	GM6311	GM6511	GM6411	GM6611	GM6711	GM6811
4.987	14.013	8	4	M4	5	2.5	2	GM6312	GM6512	GM6412	GM6612	GM6712	GM6812
4.987	16.013	8	4	M4	5	2.5	2	GM6313	GM6513	GM6413	GM6613	GM6713	GM6813
4.987	20.013	8	4	M4	5	2.5	2	GM6314	GM6514	GM6414	GM6614	GM6714	GM6814
4.987	21.013	8	4	M4	5	2.5	2	GM6367	GM6567	GM6467	GM6667	GM6767	GM6867
4.987	25.013	8	4	M4	5	2.5	2	GM6315	GM6515	GM6415	GM6615	GM6715	GM6815
4.987	26.013	8	4	M4	5	2.5	2	GM6368	GM6568	GM6468	GM6668	GM6768	GM6868
4.987	30.013	8	4	M4	5	2.5	2	GM6316	GM6516	GM6416	GM6616	GM6716	GM6816
5.987	4.013	10	5	M5	6	3	2	GM6317	GM6517	GM6417	GM6617	GM6717	GM6817
5.987	5.013	10	5	M5	6	3	2	GM6318	GM6518	GM6418	GM6618	GM6718	GM6818
5.987	6.013	10	5	M5	6	3	2	GM6319	GM6519	GM6419	GM6619	GM6719	GM6819
5.987	8.013	10	5	M5	6	3	2	GM6320	GM6520	GM6420	GM6620	GM6720	GM6820
5.987	9.013	10	5	M5	6	3	2	GM6369	GM6569	GM6469	GM6669	GM6769	GM6869
5.987	10.013	10	5	M5	6	3	2	GM6321	GM6521	GM6421	GM6621	GM6721	GM6821
5.987	12.013	10	5	M5	6	3	2	GM6322	GM6522	GM6422	GM6622	GM6722	GM6822
5.987	14.013	10	5	M5	6	3	2	GM6323	GM6523	GM6423	GM6623	GM6723	GM6823
5.987	15.013	10	5	M5	6	3	2	GM6370	GM6570	GM6470	GM6670	GM6770	GM6870
5.987	16.013	10	5	M5	6	3	2	GM6324	GM6524	GM6424	GM6624	GM6724	GM6824
5.987	20.013	10	5	M5	6	3	2	GM6325	GM6525	GM6425	GM6625	GM6725	GM6825
5.987	25.013	10	5	M5	6	3	2	GM6326	GM6526	GM6426	GM6626	GM6726	GM6826
5.987	30.013	10	5	M5	6	3	2	GM6327	GM6527	GM6427	GM6627	GM6727	GM6827
7.987	6.013	12	6	M6	11	4	3	GM6328	GM6528	GM6428	GM6628	GM6728	GM6828
7.987	8.013	12	6	M6	11	4	3	GM6329	GM6529	GM6429	GM6629	GM6729	GM6829
7.987	10.01	12	6	M6	11	4	3	GM6330	GM6530	GM6430	GM6630	GM6730	GM6830
7.987	12.013	12	6	M6	11	4	3	GM6331	GM6531	GM6431	GM6631	GM6731	GM6831
7.987	14.013	12	6	M6	11	4	3	GM6363	GM6563	GM6463	GM6663	GM6763	GM6863
7.987	16.013	12	6	M6	11	4	3	GM6332	GM6532	GM6432	GM6632	GM6732	GM6832
7.987	20.013	12	6	M6	11	4	3	GM6333	GM6533	GM6433	GM6633	GM6733	GM6833
7.987	25.013	12	6	M6	11	4	3	GM6351	GM6551	GM6451	GM6651	GM6751	GM6851
7.987	30.013	12	6	M6	11	4	3	GM6378	GM6578	GM6478	GM6678	GM6778	GM6878
7.987	40.013	12	6	M6	11	4	3	GM6379	GM6579	GM6479	GM6679	GM6779	GM6879
9.987	4.013	12	6	M6	11	4	3	GM6371	GM6571	GM6471	GM6671	GM6771	GM6871
9.987	8.013	12	6	M6	11	4	3	GM6334	GM6534	GM6434	GM6634	GM6734	GM6834
9.987	10.013	12	6	M6	11	4	3	GM6335	GM6535	GM6435	GM6635	GM6735	GM6835
9.987	12.013	12	6	M6	11	4	3	GM6336	GM6536	GM6436	GM6636	GM6736	GM6836
9.987	16.013	12	6	M6	11	4	3	GM6337	GM6537	GM6437	GM6637	GM6737	GM6837

-.025 SD	+.050 SL	±.127 HD	±.127 HH	TH	TL	HX	DR	Slotted Head		Hex Socket Head		Phillips Head	
								303 SS	416 SS	303 SS	416 SS	303 SS	416 SS
9.987	5.013	14	7	M8	12	5	4	GM6372	GM6572	GM6472	GM6672	GM6772	GM6872
9.987	8.013	14	7	M8	12	5	4	GM6338	GM6538	GM6438	GM6638	GM6738	GM6838
9.987	9.013	14	7	M8	12	5	4	GM6373	GM6573	GM6473	GM6673	GM6773	GM6873
9.987	10.013	14	7	M8	12	5	4	GM6339	GM6539	GM6439	GM6639	GM6739	GM6839
9.987	12.013	14	7	M8	12	5	4	GM6340	GM6540	GM6440	GM6640	GM6740	GM6840
9.987	13.013	14	7	M8	12	5	4	GM6350	GM6550	GM6450	GM6650	GM6750	GM6850
9.987	16.013	14	7	M8	12	5	4	GM6341	GM6541	GM6441	GM6641	GM6741	GM6841
9.987	20.013	14	7	M8	12	5	4	GM6356	GM6556	GM6456	GM6656	GM6756	GM6856
9.987	25.013	14	7	M8	12	5	4	GM6352	GM6552	GM6452	GM6652	GM6752	GM6852
9.987	30.013	14	7	M8	12	5	4	GM6357	GM6557	GM6457	GM6657	GM6757	GM6857
9.987	40.013	14	7	M8	12	5	4	GM6358	GM6558	GM6458	GM6658	GM6758	GM6858
9.987	45.013	14	7	M8	12	5	4	GM6359	GM6559	GM6459	GM6659	GM6759	GM6859
9.987	90.013	14	7	M8	12	5	4	GM6362	GM6562	GM6462	GM6662	GM6762	GM6862
11.987	10.013	20	8	M10	16	6	4	GM6376	GM6576	GM6476	GM6676	GM6776	GM6876
11.987	12.013	20	8	M10	16	6	4	GM6342	GM6542	GM6442	GM6642	GM6742	GM6842
11.987	16.013	20	8	M10	16	6	4	GM6343	GM6543	GM6443	GM6643	GM6743	GM6843
11.987	17.013	20	8	M10	16	6	4	GM6374	GM6574	GM6474	GM6674	GM6774	GM6874
11.987	20.013	20	8	M10	16	6	4	GM6344	GM6544	GM6444	GM6644	GM6744	GM6844
11.987	25.013	20	8	M10	16	6	4	GM6345	GM6545	GM6445	GM6645	GM6745	GM6845
11.987	30.013	20	8	M10	16	6	4	GM6354	GM6554	GM6454	GM6654	GM6754	GM6854
11.987	35.013	20	8	M10	16	6	4	GM6353	GM6553	GM6453	GM6653	GM6753	GM6853
11.987	40.013	20	8	M10	16	6	4	GM6355	GM6555	GM6455	GM6655	GM6755	GM6855
11.987	60.013	20	8	M10	16	6	4	GM6361	GM6561	GM6461	GM6661	GM6761	GM6861

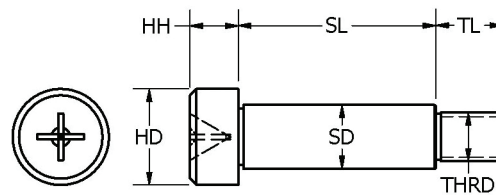
Specials made to order



Slotted Head

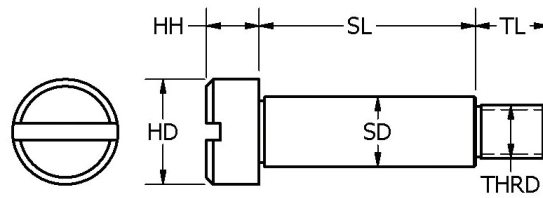


Hex Socket Head

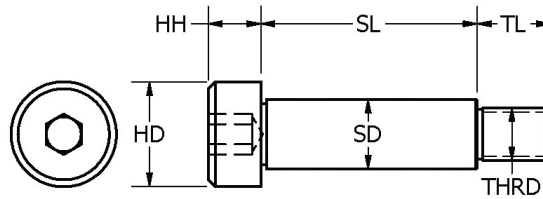


Cross Recess Head

SD -.001	SL +.002	HD ±.005	HH ±.005	TH	TL	HX	Slotted Head		Hex Socket Head	
							303 SS	416 SS	303 SS	416 SS
.0935	.0943	3/16	3/32	#2-56	1/8	1/16	G4301	G4501	G4401	G4601
.0935	.1255	3/16	3/32	#2-56	1/8	1/16	G4302	G4502	G4402	G4602
.0935	.1880	3/16	3/32	#2-56	1/8	1/16	G4303	G4503	G4403	G4603
.0935	.2505	3/16	3/32	#2-56	1/8	1/16	G4304	G4504	G4404	G4604
.0935	.3130	3/16	3/32	#2-56	1/8	1/16	G4305	G4505	G4405	G4605
.0935	.3755	3/16	3/32	#2-56	1/8	1/16	G4306	G4506	G4406	G4606
.0935	.5005	3/16	3/32	#2-56	1/8	1/16	G4307	G4507	G4407	G4607

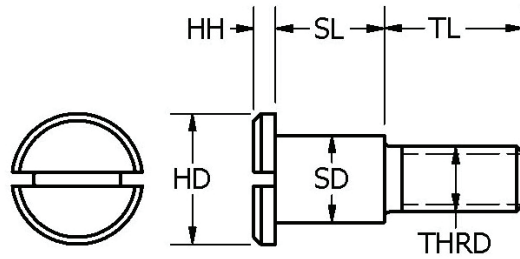
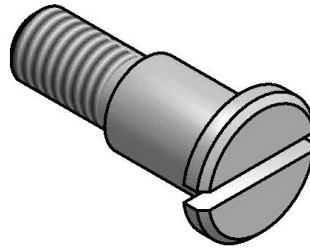


Slotted Head



Hex Socket Head

SD	SL	HD	HH	TH	TL	LG	Slotted Head
.0935	.130	3/16	1/16	2-56	.246	0.439	G5010
.0935	.130	7/32	1/16	2-56	.246	0.439	G5011
.1248	.099	3/16	1/16	4-40	.292	0.454	G5012
.1248	.146	1/4	1/16	4-40	.323	0.532	G5013
.1873	.186	5/16	1/16	8-32	.440	0.689	G5014
.2498	.186	3/8	1/16	10-32	.518	0.767	G5015
.3748	.270	9/16	1/16	1/4-20	.684	1.017	G5016



Slotted Low Head